



**Stabi R ARM HOLDER MULTI
2022-02**

Instruction manual

GENERAL DESCRIPTION:

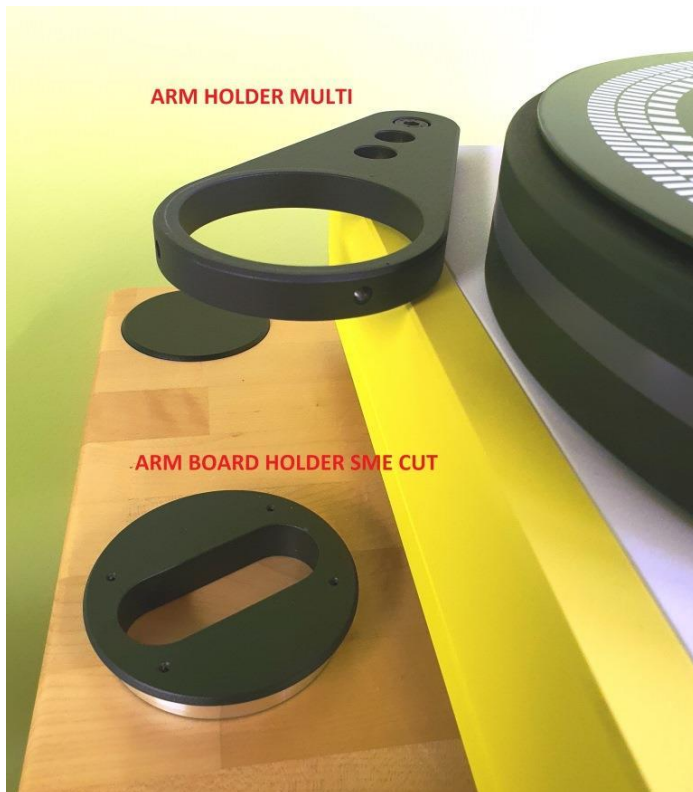
The Stabi R turntable can accept up to 4 tonearms at once though the standard arm holder and arm balcony accepts only Kuzma tonearms. But **arm holder-multi** however, can accept practically every arm from 9 to 12 inch long.

On the above photo you can see its rigid construction made from solid aluminium and fixed onto a turntable. It fits into M10 threads (Allen key 7 mm) covered with thin black plastic cups which are located in the corners of the turntable.

The black plastic cups have a thin hole into which you insert a thin rod and lift the cup out. Position the thin black plastic washer over the hole and then fit over the arm holder multi. Take M10 screw and gently screw it down by hand. Then tighten with the Allen key.

Next fit the circular armboard and tighten gently with Allen key 2 mm. Move into a suitable position and distance from the pivot. Adjust the arm holder distance by choosing one of the three available holes and then rotate circular armboard into the correct position.

You might need to experiment, especially if you have more than one arm. Check that the arms are traveling in an arc towards the spindle. Be aware that you cannot fit all arms in all positions. Finally tighten the screws.



Kuzma Ltd
Hotemaze 17A
SI-4205 PREDDVOR
SLOVENIJA
Phone: + 386 4 25 35 450
Fax: + 386 4 25 35 454
E mail: kuzma@s5.net
www.kuzma.si